

Dear Colorist,

This manual guides you through the most popular in-salon professional color services, ready to be recreated by you with the guidance of easy step-by-step instructions.

GOING DARKER

SPEED SERVICE

A fast processing time that allows for perfect and even color results in as little as 10 minutes - ideal for root touch-ups or short hair.

FORMULA

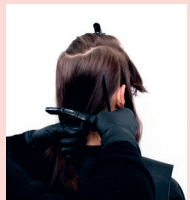
Color 1 - IGORA[®] COLOR10[®] 5-5 + IGORA ROYAL[®] Oil Developer 3% (10 Vol.) (1:1)



Recreate this look with:



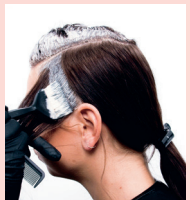
Before
Natural base 5.
Mid-lengths and ends level 8 with warm undertone.



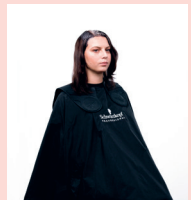
Step 1
Isolate a T-shaped panel, incorporating the front outer hairline and the top crown section.



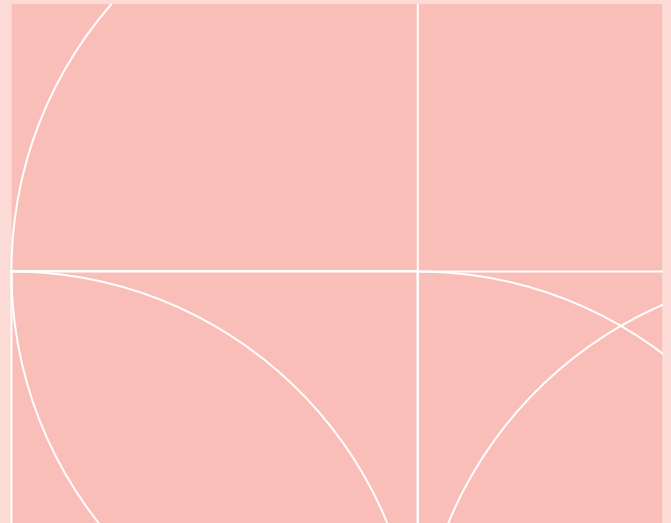
Step 2
Apply product only on the regrowth area within the T-section.



Step 3
Continue with the same technique to the side area. Seamlessly blend color into the mid-lengths, to ensure a perfect color transition and preventing color banding.



Step 4
Develop 10 minutes. Rinse, shampoo and condition.



SHADOW ROOTS

A technique using our dual-system application method to blend darker roots with lighter mid-lengths and ends by providing a transitional illusion for optimal color results.

FORMULA

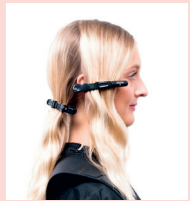
Color 1 - Roots: IGORA ROYAL 7-42 + 9-42 (1:1) + IGORA ROYAL Oil Developer 3% (10 Vol.) (1:1)
Color 2 - Mid-lengths & ends: IGORA VIBRANCE[®] 9-42 + 0-00 (3:1) + IGORA VIBRANCE Activator Lotion 1.9% (6 Vol.) (1:1)



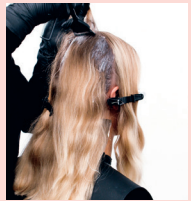
Recreate this look with:



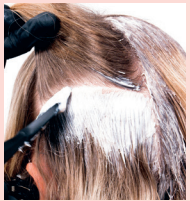
Before
Natural base 8.
Mid-lengths and ends level 10.



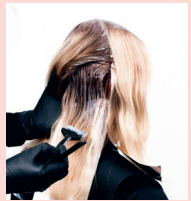
Step 1
Part the hair into a cross-parting.



Step 2
Apply Color 1 on the roots along the cross section.



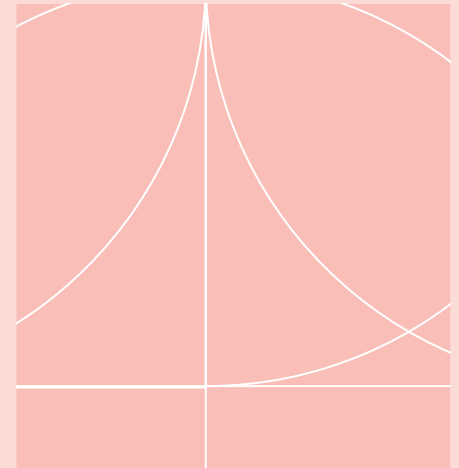
Step 3
Continue applying Color 1 to the roots across the entire head.



Step 4
Apply Color 2 to the mid-lengths and ends, blending the product with the previously applied Color 1 on the roots. Use a foil to support the application.



Step 5
Leave for a total of 20 minutes. Rinse, shampoo and condition.



LOW LIGHTS

Utilize this technique in case of heavy highlights or almost completely blonde existing color. Add darker low-lights to achieve a combination of different depths and tone directions to create natural looking reflections.

FORMULA

Color 1 - Roots: IGORA ROYAL 6-4 + 6-1 (1:1) + IGORA ROYAL Oil Developer 3% (10 Vol.) (1:1)
Color 2 - Mid-lengths and ends: IGORA ROYAL 8-4 + 8-1 + 0-55 (2:2:1) + IGORA ROYAL Oil Developer 3% (10 Vol.) (1:1)



Recreate this look with:



Before
Natural base 6.
Mid-lengths and ends level 9.



Step 1
Take a round section from mid-recession to the crown area on each side.



Step 2
Starting on the left side, at the hairline, take slice sections, applying Color 1 on the roots and Color 2 on the mid-lengths and ends.



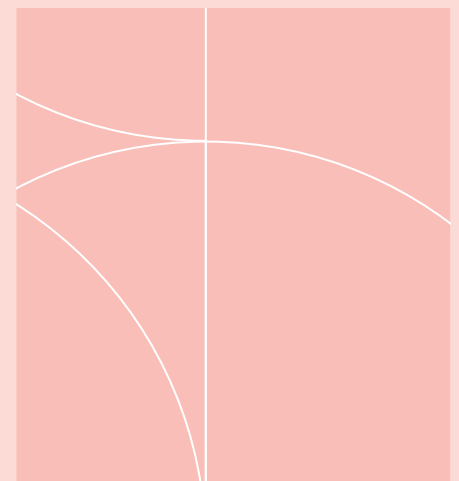
Step 3
Repeat the same process on the opposite side.



Step 4
Finally, in the same manner, apply Color 1 and Color 2 on the remaining top section.



Step 5
Leave for 30 minutes. Rinse, shampoo and condition.



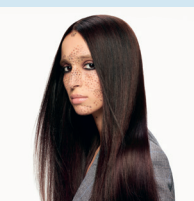
GOING LIGHTER

TONE-ON-TONE FOILING

Alternating sliced dimensional highlights with natural shimmering hues. Ideal for those clients who want a natural result without changing their look.

FORMULA

Color 1 - IGORA ROYAL 9-98 + IGORA ROYAL Pastelfier (1:1) + IGORA ROYAL Oil Developer 9% (30 Vol.) (1:1)
Color 2 - IGORA ROYAL 7-65 + 7-77 (1:2) IGORA ROYAL Oil Developer 6% (20 Vol.) (1:1)
Color 3 - IGORA ROYAL 5-6 + IGORA ROYAL Oil Developer 3% (10 Vol.) (1:1)



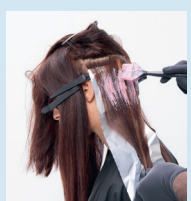
Recreate this look with:



Before
Regrowth is a natural base 5.
Lengths & ends are also base 5 with red undertone.



Step 1
Take a cross-parting.



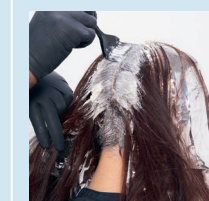
Step 2
Starting at the nape area, work foils with slice placements alternating Color 1 and Color 2.



Step 3
Continue with the foil work in the same fashion.



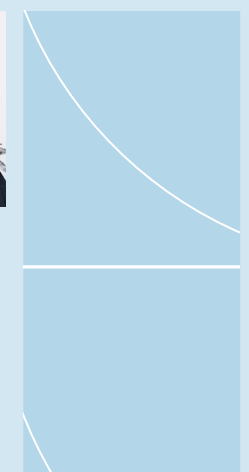
Step 4
Carry on with the foil work on the front of the head, continuing alternating Color 1 and Color 2.



Step 5
Apply Color 3 from roots to ends across the rest of the head and between the foils.



Step 6
Leave for 30 minutes. Rinse, shampoo and condition.



FACE-FRAMING

Popular placement that emphasizes facial features by framing face shape. The result can illuminate the features if lighter shades are utilized or softening them if darker shades are used instead.



Recreate this look with:



Before
Virgin hair depth 7.



Step 1
Take a face framing section, 5cm away from the hairline.



Step 2
Subdivide the back section in two large quadrants and apply Color 1 from roots to ends.



Step 3
Working towards the top and side of the head, take triangular sections and apply Color 2 and Color 3 in an alternating fashion.



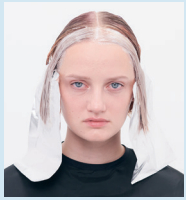
Step 4
At the face framing section, staying 2cm away from the roots, apply Color 4 all the way through mid-lengths & ends, using foils to isolate the placement. Leave for 20 minutes. Apply Color 4 to the roots of the face framing section.



Step 5
Leave for another 20 minutes. Rinse and shampoo.



Step 6
Apply Color 5 from roots to ends on the face framing section, using a foil to support the placement.



Step 7
Leave for 20 minutes. Rinse and condition.

FORMULA

- Color 1** - IGORA ROYAL® 9-7 + 6-88 + IGORA ROYAL Pastelfier (5:1:1) + IGORA ROYAL Oil Developer 12% (40 Vol.) (1:1)
- Color 2** - IGORA ROYAL 8-11 + 0-99 (20:1) + IGORA ROYAL Oil Developer 9% (30 Vol.) (1:1)
- Color 3** - IGORA ROYAL 9-1 + 7-21 + 9-24 (2:1:1) + IGORA ROYAL Oil Developer 6% (20 Vol.) (1:1)
- Color 4** - IGORA® VARIO BLOND Plus Lightener + IGORA ROYAL Oil Developer 6% (20 Vol.) (1:2)
- Color 5** - IGORA VIBRANCE® 9.5-21 + IGORA VIBRANCE Activator Lotion 1.9% (6 Vol.) (1:1)

MULTITONE FOILING

A technique that celebrates textured and curly hair. It adds soft grading from deeper to lighter and intense tones or different shade directions to beautifully enhance the texture of the hair.



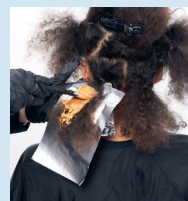
Recreate this look with:



Before
Virgin hair depth 3.



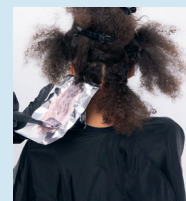
Step 1
Divide the head in a cross-parting, securing the sections with an elastic band.



Step 2
Starting at the nape area, work foils with slice placement applying first Color 1.



Step 3
Alternate with Color 2.



Step 4
And with Color 3.



Step 5
Work in the same way across the whole of the back section.



Step 6
Carry on in the same fashion on the sides and top section, alternating Color 1, Color 2, and Color 3.



Step 7
Leave for 30 minutes. Rinse, shampoo and condition.

FORMULA

- Color 1** - IGORA ROYAL 6-88 + IGORA ROYAL Oil Developer 9% (30 Vol.) (1:1)
- Color 2** - IGORA ROYAL 8-77 + 0-89 + IGORA ROYAL Pastelfier (3:1:4) + IGORA ROYAL Oil Developer 12% (40 Vol.) (1:1)
- Color 3** - IGORA ROYAL 8-4 + 0-89 + IGORA ROYAL Pastelfier (3:1:4) + IGORA ROYAL Oil Developer 12% (40 Vol.) (1:1)

COLOR GRADING

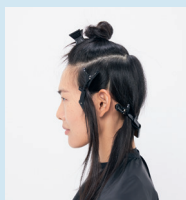
This technique allows to seamlessly melt colors for a rich multi-dimensional look. It combines multiple shades together for a beautiful blend of tones.



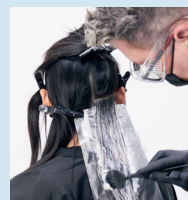
Recreate this look with:



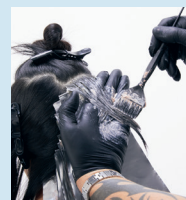
Before
Virgin hair depth 4.



Step 1
Take a horseshoe section and a vertical section on the top of each ear.



Step 2
Starting at the nape area, apply Color 1 on the roots, Color 2 on the mid-lengths and Color 3 on the ends. Make use of foils to support the placement.



Step 3
On shorter layered hair, apply Color 1 on the roots and Color 2 on mid-lengths and ends.



Step 4
On the sides, continue in the same fashion, alternating Color 1, Color 2, and Color 3.



Step 5
Apply Color 1, Color 2, and Color 3 in the same way across the top horseshoe section.



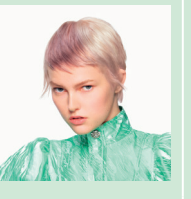
Step 6
Leave for 30 minutes. Rinse, shampoo and condition.

FORMULA

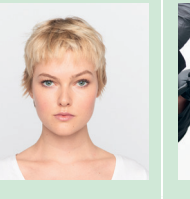
- Color 1** - IGORA ROYAL 5-0 + IGORA ROYAL Oil Developer 3% (10 Vol.) (1:1)
- Color 2** - IGORA ROYAL 7-4 + 6-88 (20:1) + IGORA ROYAL Oil Developer 9% (30 Vol.) (1:1)
- Color 3** - IGORA ROYAL 8-11 + IGORA ROYAL Oil Developer 9% (30 Vol.) (1:1)

TRIANGULAR PLACEMENT

Strong look that adds contrast and dimension to the hair. It is a versatile placement that can be adapted to both short and long haircuts, creating a bold, yet feminine, color result.



Recreate this look with:



Before
Roots are a natural base 8. Lengths & ends are highlighted on a level 10.



Step 1
Take a cross parting and apply Color 1 to the roots along the parting.



Step 2
Continue applying Color 1 to all roots. Starting from the crown working down the nape and then towards the front hairline.



Step 3
Apply Color 2 to the mid-lengths & ends on the side and back and on the mid-lengths on the top section. Leave out any pre-lightened parts.



Step 4
Leave for 45 minutes. Rinse, shampoo and blow dry the hair.



Step 5
Take a triangular section, from mid recession to the crown.



Step 6
Apply Color 3 from roots to ends within the triangular section. Utilize a foil to support the placement.



Step 7
Continue applying Color 3 from roots to ends on side area.

Step 8
Leave for 30 minutes. Rinse, and condition.