

# IGORA ROYAL®

## MIXING RECOMMENDATIONS



PREVIOUS SHADE	▶	RECOMMENDED SUBSTITUTION
<b>IGORA ROYAL</b>		
4-5		4-0 + 0-55 (2:1)
4-65		3-65 + 5-65 (1:1)
9.5-18		9.5-49 + 0- 89 (20:1)
D-0 Diluter		0-00
E-0		pastelfier
<b>IGORA ROYAL #RoyalTakeOver</b>		
3-222		1-1 + 5-21 (1:2)
4-332		No mixing possible
4-998		4-99 + 4-88 (2:1)
5-113		5-1 + 0-33
5-819		5-88 + 5-1 (2:1)
5-869		5-88 + 5-6 (1:1)
6-299		6-12 + 6-99 (2:1)
6-491		5-0 + 5-7 (3:1)
7-764		7-77 + 7-65 + 7-4 (2:1:0,5)
7-982		6-12 + 9-98 (1:2)
8-176		9-1 + 7-76 (2:1)
8-211		7-21 + 9-1 (1:2)
8-849		No mixing possible
9.5-314		No mixing possible
9-481		9-42 + 0-88 (10:1)
9-567		9-55 + 9-7 (1:2)
9-674		No mixing possible
12-481		No mixing possible
<b>IGORA ROYAL FASHION LIGHTS</b>		
L-22		No mixing possible
L-33		No mixing possible
L-49		No mixing possible
<b>IGORA ROYAL Pearlescence</b>		
11-89		No mixing possible
6-89		No mixing possible
9.5-29		No mixing possible
9.5-89		No mixing possible

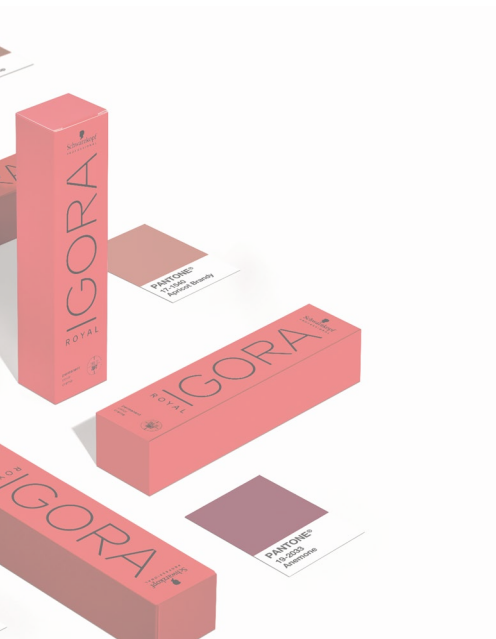
*Together. A passion for hair®*

# IGORA ROYAL®

## MIXING RECOMMENDATIONS



PREVIOUS SHADE	▶	RECOMMENDED SUBSTITUTION
<b>IGORA ROYAL NUDES</b>		
7-46		6-46 + 8-46 (1:1)
<b>IGORA ROYAL Opulescence</b>		
3-19		No mixing possible
5-67		5-6 + 5-7 (1:1)
6-78		No mixing possible
7-48		7-4 + 6-88 (20:1)
8-19		8-1 + 0-99 (20:1)
9-57		9-55 + 9-7 (1:1)



*Together. A passion for hair®*